



ST. MARY CATHOLIC CHURCH

Forming Saints for Christ and the Church

OCTOBER 19, 2014
29TH SUNDAY IN
ORDINARY TIME

512 North Perkins Street ✘ Rushville ✘ Indiana ✘ 46173
Parish: 765-932-2588 ✘ School: 765-932-3639 ✘ www.stmaryrush.org

Staff

Rev. Jeremy M. Gries, Pastor.....frgries@stmaryrush.org
Debbie Spaeth, Administrative Assistant.....dspaeth@stmaryrush.org
Terri Nigh, Administrator Religious Ed. (ARE).....tegar2@frontier.com
Sherri Kirschner, Principal.....skirschner@stmaryrush.org
Theresa Komlanc, School Secretarytkomlanc@stmaryrush.org

Parish Office Hours

Monday-Wednesday...8:30a.m.-4:30p.m.
Thursday.....9:30a.m.-4:30p.m.
Friday.....8:30a.m.-Noon

Our St. Mary Prayer Line

Regenia Ripberger 765-561-1179
Lisa Wagoner 812-593-0790
765-663-2444

Parish Council

Chair: Shawn Adkins

Finance Council

Chair: Doug Krieger

Board of Education

Chair: Jim Cowan

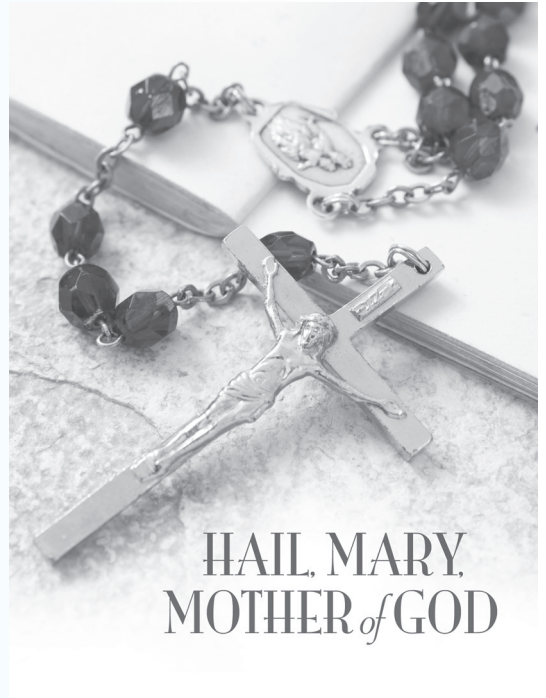
Baptism

Call the parish office for scheduling.

Reconciliation/Confession

Saturday...4:30p.m.- 5:15p.m.
Tuesday.....6:00p.m.6:25p.m.

Marriage Engaged couples must meet with the Pastor to complete initial marriage paperwork at least 9 months before the anticipated wedding date *and prior to making any other arrangements concerning the wedding.*



HAIL, MARY,
MOTHER of GOD

Cover design ©Liturgical Publications Inc. Photo © Paul McGuire, from bigstockphoto.com.



Two important things are headed our way in the next few weeks: 1) The Archdiocese Annual United Catholic Appeal, which this year will include an 'in-pew' appeal and 2) a Parish Mission given by Fr. George McInnis, a Father of Mercy. Both events will kick off on November 8-9.



As you know, the **United Catholic Appeal** provides funds to meet needs within the diocese that no single parish could tackle alone in the areas of Proclaiming the Word of God, Celebrating the Sacraments, and Exercising the Ministry of Charity. St Mary's has a strong track record of not only meeting our goal but exceeding it. I pray this will continue this year as well. As your pastor, I am more interested in the overall participation of parishioners than with the amount pledged. While we've done well in the past, there is room for greater participation. All registered households will be receiving a pledge card in the mail in the coming weeks. Please prayerfully discern how God has blessed you and how you are being called to respond to this request. If married, discuss with your spouse and family the importance of giving and pray about this decision together. All households are invited to bring their pledge card to Mass with them during the weekend of Nov. 8-9 where we will each 'make our pledge.' I personally support this appeal with my own pledge, and I invite you to join me.

A **Parish Mission**... What's that? We'll one way to think of a Parish Mission is as a spiritual retreat for the entire parish. It is a dedicated time set aside to grow in our personal and collective relationship with Christ and the Church. Missions focus on drawing people deeper into the mystery of God and driving people outward in Christian discipleship. This is done through prayer, celebration of the Sacraments, and enlivening talks. Fr. McInnis and the religious community to which he belongs – the Fathers of Mercy, have dedicated their lives to this important apostolic work. The talks are free of charge and all are invited. You might even bring a friend! Fr. McInnis told me he is a stickler for time, so he will start at 7p and be done by 8p. Please clear you schedules and plan to join us all week from Sunday to Thursday evening for a retreat with your fellow parishioners. *St Mary, Pray for us. ~ Fr. Gries*



Mass Schedule: October 20 - 26

Monday		No Mass
Tuesday	6:30p.m.	Myron Rosfeld
Wednesday	8:30a.m.	Stella Sampson (Sodality)
Thursday	8:30a.m.	Charles & Thada Ariens
Friday	8:30a.m.	Bob Osborne
Saturday	5:30p.m.	St. Mary and St. Rose
Sunday	7:30a.m.	Don Weiler
	10:00a.m.	Deceased members of the Harpring family

Choir practice on Thursdays, at 7p.m., in the church.

Changing Footprints is struggling to keep ahead of our demand for men's (large size tennis shoes and boots and children's shoes. However, women's shoes will also be accepted. Shoe containers are at the back of church at both doors. If you would like to volunteer at their warehouse, hours are Tuesday and Saturday - 10a.m.-noon.

K of C Chicken Fry - Saturday, October 18, 2014 - 5-7:30p.m. Proceeds to benefit Changing Footprints. Everyone is welcome!



Items for the month of October: Canned corn, canned green beans and canned fruit. Donations may be left at all three church entrances.

Barbara Huffman, a resident of Flatrock River Lodge, passed away on October 4, 2014. Our condolences to her family and all of those who cared for her.

Our Condolences to: Doug and Rosie Osborne and the Osborne family at the death of Doug's mother, Ruby Osborne.

Our Sympathy to: The Sheehan family at the death of Heather Sheehan's mother, Vicki Smith.

ATTENTION QUILTERS! We have another set of quilt blocks ready to quilt. Alberta Neuman has them so, please, see her for your blocks. Also, there are still 12 blocks out from last year's 'Grandmothers Cross'. We would like them back by Christmas, Please. Thanks and God Bless! *Mary Delay and Alberta Neuman*



Catherine Duncan, Mary Whinery and all of those who have fallen away from the Catholic Church.

Automated Sunday Contributions: St. Mary Catholic Church offers you a way to make your parish contributions, automatically, on line. Many people, today, are accustomed to using "bill pay" or other on-line banking services. Now, you can do the same for your Sunday contributions. This is completely voluntary and is offered solely for parishioner convenience. Authorization forms are available in the racks at the Perkins Street entrances or by contacting the parish office.

Liturgical Roles

Servers – October 25 & 26

Sat.	5:30p.m.	Will Thoman, Leila Rankin-Amos Nicholas Hoeing
Sun.	7:30a.m.	Addison Ballenger, Cody & Tristan Carmony
	10:00a.m.	Gus Haley, Byron Pavey, Olivia Yager

Lectors – October 25 & 26

Sat.	5:30p.m.	Tom Giesting
Sun.	7:30a.m.	Regenia Ripberger
	10:00a.m.	Cecilia Orr

Extra-Ordinary Ministers – October 25 & 26

Sat.	5:30p.m.	Shelly Bostic, Bob Dwenger, Denise Small
Sun.	7:30a.m.	Jason Pavey, Jerry Rudolf, Gary Nigh
	10:00a.m.	Kim S. Yager, Kim L. Yager, Bob Spaeth

Ushers for October 2014

Sat.	5:30p.m.	Michael McCallister & Volunteer
Sun.	7:30a.m.	J.D. Herbert & Volunteer
	10:00a.m.	David & Brayton Schultz

Ministers-to-the-Sick

Oct. 20 Donna Becraft & Jeanie Hedrick

Money Counters

Oct. 20 Nancy Newbold, Lucille Hinton, Donna Land,
Diana Leising
Oct. 27 Kathy Dean, Jeanie Spaeth, Debbie Banks,
Gary Nigh

CATHOLICISM-COFFEE-CONVERSATION
During the Sunday Morning RE Classes in the
Multipurpose Room (following 7:30 Mass)

Nov. 2, 9, 16, 23; Dec. 7

Hosted by Fr. Robert Barron of Word on Fire Catholic Ministries. 1hour DVD sessions followed by group discussion. Visit <http://www.catholicismseries.com/>

6. A Body Both Suffering and Glorious: The Mystical Union of Christ and the Church.
7. Word Made Flesh, True Bread of Heaven: The Mystery of the Church's Sacraments and Worship.
8. A Vast Company of Witnesses: The Communion of Saints.



October Birthdays - Elderly Shut-Ins

October 22 Clemma Conroy & Billie Meyers

Sunday Collection
October 12, 2014



Adults (125 Envelopes + 9 Loose Checks)	\$ 6,705.00
Youth (6 Envelopes)	\$ 6.00
Loose	\$ 495.30
Total	\$ 7,206.30
Weekly Budget (2014/2015)	\$ <u>7,300.00</u>
Surplus (+) / Deficit (-)	\$ -93.70⊕
Sunday 10/12/14	\$ 7,206.30
Regular Maintenance	\$ 690.00
Preserving Our Heritage	\$ 5,558.00
Votive Candles	\$ 55.00
Energy Costs	\$ 155.00
Food Pantry	\$ <u>162.00</u>
TOTAL 10/12/14	\$ 13,826.30

**-St. Mary Catholic School-
"Believing and Achieving"**

The Annual Fall Rummage Sale, benefitting the St. Mary School PTA, will be held on Friday, October 31 from 8:30a.m.-4:00p.m. and Saturday, November 1 from 8:30a.m. -1:00p.m. at the Conservation Club, 1204 E. St. Rd. 44. Please start gathering your donations. Drop off for rummage sale items will be on Thursday, October 30 from 8:30a.m. -6:00p.m. at the Conservation Club. Anyone wanting to donate items for the bake sale can also bring those items on Thursday. Please contact Rya Meo (561-0226) with any questions. Thank you.

The Holiday Expo will be held on Saturday, November 8 from 9a.m.-2p.m. at the Rushville Elementary School. St. Mary PTA will be participating in this event, again this year. We are asking for donations of crafts and baked goods. Items can be brought to the school on or before Friday, November 7. Questions-please call Jennifer Hoeing at 765-570-6214.

Is Your Marriage Hurting in Anyway?

Has your marriage grown cold, distant, unloving or uncar-ing? Then please consider Retrouvaille-a program designed to help heal and renew marriages. Retrouvaille is for marriages that have lost some of their spark, for marriages having difficulties in communication and even those mar-riages on the edge of separation or divorce. The next Indianapolis program begins February 27, 2015. We are currently accepting reservations. Call 317-489-6811. However, we encourage you to visit another community, if you cannot wait that long. For more information, contact Retrouvaille International.

PARISH MISSION

Preserving Our Heritage and Passing on Our Faith
November 10-13 from 5:30-8:00p.m.
Entitled "Christ our God, Truth Incarnate"
Presented by: Fr. George McInnis, C.P.M.
<http://fathersofmercy.com/>

-Religious Education-

Sunday Morning Religious Education Registration, No class October 19 and October 26 (Fall Break).

The Rite of Christian Initiation of Adults (RCIA): No class October 19 (Fall Break). Next class-October 26. Please keep Catechumens: Chris Nobbe and Monte Sitton and Candidates: Joe Hoffman, Evelyn Sammons, Marcy West-phal and Jessica Berkemeier in your prayers.

High School Religious Education/Confirmation Prep: Junior class "Day of Reflection" is scheduled for November 1, 2014 at CYO Camp Rancho Framasa. Please keep our nine young people, who will be attending, in prayer.



Attention All Men! Do you know your risk for Prostate Cancer?

- A Prostate Cancer PSA test is the most accurate method for the detection of prostate cancer.
 - 1 in 6 men will get Prostate Cancer.
 - PSA tests have been used for over 25 years.
 - A simple PSA blood test could save your life.
- Life Line Screening will be at St. Mary School on Wednesday, October 29, 2014. Call 1-888-653-6441.

In today's Gospel, we hear proclaimed a profound teaching by Jesus on Stewardship. What belongs to Caesar? What belongs to God? Christian stewards recognize that every-thing they have belongs to God. God created them, and God has claims on every part of their existence. They also realize that the sovereign is an institution whose nature and purpose is to promote the common good and protect the welfare of its citizenry. As long as it accomplishes this mission, while treating every single person with deep respect, justice and compassion, it merits the steward's support and cooperation. Christian stewards know what belongs to the Lord, and they are better citizens when they live their lives according to His Gospel.

